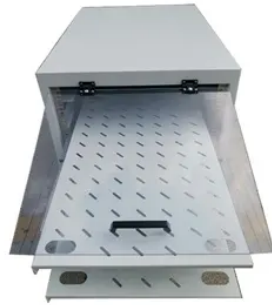


What battery is the external DC power supply



Overview

Power sources like batteries provide the electrical energy for circuits to function. Anything that uses a battery is relying on a DC power source. Cell phones, laptops, cars, and cordless appliances like drills or even. By necessity, all power sources involve three interlinked electrical properties: voltage, current, and power. Although these topics are covered in much greater detail in specific tutorials. The most commonly recognized DC voltage source is the electric battery- a device that uses chemical reactions to produce and receive electrons at accessible points that are located for co. Batteries are mobile sources of electric power. We use them to power our phones, computers, and, increasingly, our cars. You don't need to understand the electrochemistry. We've seen that batteries are often depicted as a circle with a positive (+) and negative (-) symbol indicating the positive and negative terminals: This symbol indicates a gener.



Article Content

When should external diodes be used with a power supply?

There are several instances when external diodes (or FETs) are used with power supplies: 1. Driving DC Motors 2. Series Operation 3. Redundant Operation 4. Battery Back-up 1. Driving DC Motors There can be confusion regarding the use of external diodes when powering DC motors; mostly where to place the diode or what their purpose [...]

Power Supply

Power Supply Architecture V1. The schematic shows the architecture of the power supply. Key points to note are that there are two BAT60A diodes, one from the 3.3V supply from the KL26/27 interface chip, and one from the external ...

What is power supply? Basic introduction of power ...

It is external power supply. In this category, the AC plug is either fixed or interchangeable. In addition, the type of DC jack is various. Desktop adapter: It is external power supply. In this category, the AC inlet could be Class II or Class ...

power supply

Yes, you absolutely can run off of DC power. Google DC-DC ATX power supply units. Here is an example. DC power supply units are not common, but are often used with computers connected directly to battery backups and areas where connection to the AC power grid is not available, such as boats. You just have to make sure your DC supply is capable ...

The Ultimate Guide to DC Batteries: What You Should ...

A DC battery, or direct current battery, is a type of energy storage device that provides electrical energy in direct current. Unlike alternating current (AC) batteries, which supply power that changes direction periodically, ...

What is a Battery DC

By using battery DC power, devices can be powered directly by the same current that the battery produces, resulting in a more efficient and streamlined power supply. Battery DC power also offers more flexibility and portability. Since batteries store energy, they can be used in situations where a direct power source is not available or ...

External Power Supplies

External Power Supplies (EPS) are devices used to supply electricity to, and to charge built-in batteries of electronic and electric devices such as laptops, mobile phones, tablets, MP3 players, electronic cigarettes, electric tooth brushes, ...

Common external power supply

Common external power supply and the USB-A and USB Micro-B ends of the detachable cable. The common external power supply (Common EPS) was a European Commission (EC) specification for a universal charger for smartphones sold within the European Union. The specification included the use of a USB Micro-B connector and adherence to the USB Battery ...

The Ultimate Guide to DC Batteries: What You Should Know

Part 1. What is a DC battery? A DC battery, or direct current battery, is a type of energy storage device that provides electrical energy in direct current. Unlike alternating current (AC) batteries, which supply power that changes direction periodically, DC batteries maintain a constant voltage and flow of electricity in one direction. This ...

What Are DC Batteries and How Do They Function?

What Are the Advantages and Disadvantages of Using DC Batteries? DC batteries offer several advantages: Consistent Power Supply: They provide stable voltage levels ideal for sensitive electronic devices.; Efficiency: There are no losses associated with converting AC to DC, making them efficient for direct applications.; However, they also have disadvantages:

DC Power Supplies: What They Are And How To Use ...

DC power supplies are essential tools in electronics and electrical engineering. They provide stable and reliable power for various applications, from prototyping circuits to testing complex electronic systems. ...

Power supply to Arduino Mega

The Mega 2560 can be powered via the USB connection or with an external power supply. The power source is selected automatically. External (non-USB) power can come either from an AC-to-DC adapter (wall-wart) or battery. The adapter can be connected by plugging a 2.1mm center-positive plug into the board's power jack. Leads from a battery can be ...

Automatic Battery/External Power supply switch circuit

The most simple way to automatically switch from battery to external DC power is not to switch at all. Connect the load to the XUMA output only, and connect the external DC to the XUMA input only. This works if the ...

External power supply for Canon 600ex-rt that is not a battery pack

I need to power my canon speedlite 600ex-rt. It has an external power plug for which I can find plenty of battery packs (e.g. Godox). But I just want to plug it into 240V AC supply voltage. I cant find info about what type of power it takes in through the external power plug (apparently it is a quite high voltage, not a usual 4-6V (4xAA)). If I ...

What Are DC Batteries and How Do They Function?

DC batteries, or direct current batteries, are essential power sources that provide electrical energy in a unidirectional flow. They are commonly used in various applications, including portable electronics and renewable ...

Switching between battery and external power source

Switching between battery and external power source . Hey there! Trying to design a circuit to automatically switch to use external 5V power source when available, otherwise use its non-rechargeable battery (could be 6V when new to 3.3V when device no longer operable). I am thinking to connect the battery to the load via a depletion mode P-Channel JFET, while the ...

Powering Dc Motor with external power

Hello, Im new to Arduino Uno. Im powering a dc water fountain and cannot get it to work. My pump is rated for 1.5v-9v with max of 650 mA Im including a pic from Fritzling. My power supply is 5v 650 mA. The blue wire ...

DC Power source switching methods

While that probably doesn't matter for the external power supply, we don't really want to be wasting so much power on a battery operated system from the battery supply. If the battery is rechargeable and the external DC ...

External power supply for STM32 MCU | All About Circuits

Just think of a car battery. Your car radio will draw just a few amps but the battery is capable of supplying some hundreds of amps for a short time. Like Reply. MrChips. Joined Oct 2, 2009 32,465. Jun 18, 2018 #6 What they are saying is if you intend to power the board with 5V applied to CN4 pin 4, don't try to draw more than 500mA into or off the board. ...

What To Look for in an External Power Supply for Your Laptop

Before buying an external power supply, ask for the battery life estimate. Chances are you will connect multiple devices, including laptops, smartphones, and cameras to your external power supply. Further, you may be someone who uses their laptop for demanding tasks such as gaming and streaming TV shows. Whichever the case, your laptop's battery will ...

DOE Appliance Standards for External Power Supplies

The U.S. Department of Energy (DOE) has recently proposed new energy conservation standards for External Power Supplies (EPSs). These proposed standards, known as Trial Standard Level 4 (TSL4), aim to tighten energy ...

Choosing your power source – Support

Using the International DC Power Supply. Secure the DC connector from the included International DC Power Supply to the DC Power Jack on the rear of your SHOGUN CONNECT. The optional ATOMOS coiled DC to D-Tap cable (ATOMDTPCB2) can also be used to connect a D-Tap power source to this connector in the field. DC to D-Tap Coiled Cable

What Is the Difference Between AC and DC Power Supplies?

For applications in far-flung locations, battery power, fuel cells, or solar cells, which provide DC power, are more readily available than AC power from electricity lines. In these situations, DC-DC power supplies may be required to change the output voltage for a device's use. AC vs. DC Power Supply - What's the Difference? As noted, the main difference between AC and DC ...

Transmitter external power supply - Radiodetection Support

The external Mains or vehicle power supplies provides an alternative and convenient method of powering the transmitter. WARNING! The mains power supply rating are: 100-240VAC, 1.3A. Always use an adequately rated detachable mains lead. WARNING! The mains power supply is not IP rated and should not be used in wet locations . Transmitter DC Input

Understanding AC/DC Power Supplies

to deliver electricity through power transmission lines to homes and businesses. Therefore, if AC is the type of power delivered to your house and DC is the type of power you need to charge ...

DC Power Supply: Basics, Types and Applications

Battery eliminators, constant voltage power supply, constant voltage/constant current power supply, programmable supply, and multi-range power supply are the most common DC power supplies available on the market.

Godox TT685 external "Charging DC IN" connector

The manual identifies the feature (14) as External Power Connector. I think since the flash uses 4 x 1.5v batteries that the connector is similar to the units found on Nikon and Canon strobes. However neither the pinouts for the connector, nor is the external battery pack or cord mentioned as an accessory.

Understanding AC/DC Power Supply | Article | MPS

Therefore, if AC is the type of power delivered to your house and DC is the type of power you need to charge your phone, you are going to need an AC/DC power supply in order to convert the AC voltage coming in from the power grid to the ...

What Current Does a Battery Produce? (AC Or DC ...

Current from a Battery is AC Or DC . Batteries are a common power source in many electronic devices. They come in a variety of shapes and sizes, but all batteries have one thing in common: they produce current. This ...

External battery power supply

... which has the added benefit of being able to power the Nano's DC barrel jack in addition to USB. Does this mean that if a battery pack has two 2A or 3A USB outputs each, would I be able to run the Nano in 10w mode by plugging in both the mini USB and barrel at the same time (using a USB to barrel adapter for the second USB port).

How to add a battery as automated alternative power supply?

Hi, I would like to expand the functionality of my warming box (6) by adding a rechargeable battery and thus allow mobile operation just like everyone knows it from a notebook approach. Default supply should be provided by an external power supply (1). In parallel, the connected power supply should charge the permanently installed battery (4) via a DC coverter ...

What power supply can I use with my Arduino board?

Some Arduino boards like UNO, MEGA and DUE, come with an AC socket that can be used to power the boards and to supply additional voltage if needed. A power supply adapter that provides from 7 to 12V (Volts) of DC (Direct Current) is required. The adapter is plugged onto the wall socket and the other end goes directly onto the board's AC socket.

DC Power Supplies: Comprehensive Guide | Tech

A DC power supply is a device that converts AC voltage from a power source into DC voltage. It provides a stable and continuous supply of DC power to electronic devices, ensuring they operate correctly. DC power ...

External power supplies

Like any other power supply, these products will convert AC supply voltages to a safe low-level DC voltage used to power equipment or to charge batteries. Where are external power supplies used? The application of an external power supply ...

Power Supply Types | What are the Different Types of Power ...

Whether you need a power supply replacement or you're trying to build a custom system from scratch, choosing among the seemingly endless list of power supply types is a challenge.. Selecting the wrong types of power supply can lead to poor performance, costly system downtimes, or even catastrophic power supply failure.. The good news is we're here to ...

Understanding AC/DC Power Supplies

Figure 2: Linear AC/DC Power Supply Block Diagram Traditional linear AC/DC power supply design has evolved over the years, improving in terms of efficiency, power range, and size — but this design has some significant flaws that limit its integration. A huge limitation in a linear AC/DC power supply is the size of the transformer. Because the ...

What happens if I power the Arduino with both the USB and external ...

From arduinoBoardUno: Power. The Arduino Uno can be powered via the USB connection or with an external power supply. The power source is selected automatically. Put the external power through a voltage divider or transistor-based inverter and into an analog (divider) or digital (inverter) pin and check the appropriate value from the pin.

Using a Switching Power Supply for Battery Charging

Constant current charging is a way to charge common batteries. This is a charging method where batteries are charged with a constant current from beginning to end. A standard switching power supply is a constant voltage power supply, so it monitors fluctuations in output voltages, inputs the results in the control circuit, and executes constant voltage ...

External Power Supply: How to Pick the Best One (Guide)

An external power supply that uses rechargeable batteries to store electrical energy is known as a battery pack. Mobile and outdoor applications use them to provide power ...

Contact Us

For more information, pricing, or custom container solutions, please contact us:

Website: <https://www.urbannotion-pr.co.za>

Email: sales@urbannotion-pr.co.za

Phone: +27 82 416 7289

Address: Neue Mainzer Straße 66-68, 60311 Frankfurt am Main, Germany

This document is for informational purposes only. Specifications subject to change without notice.

